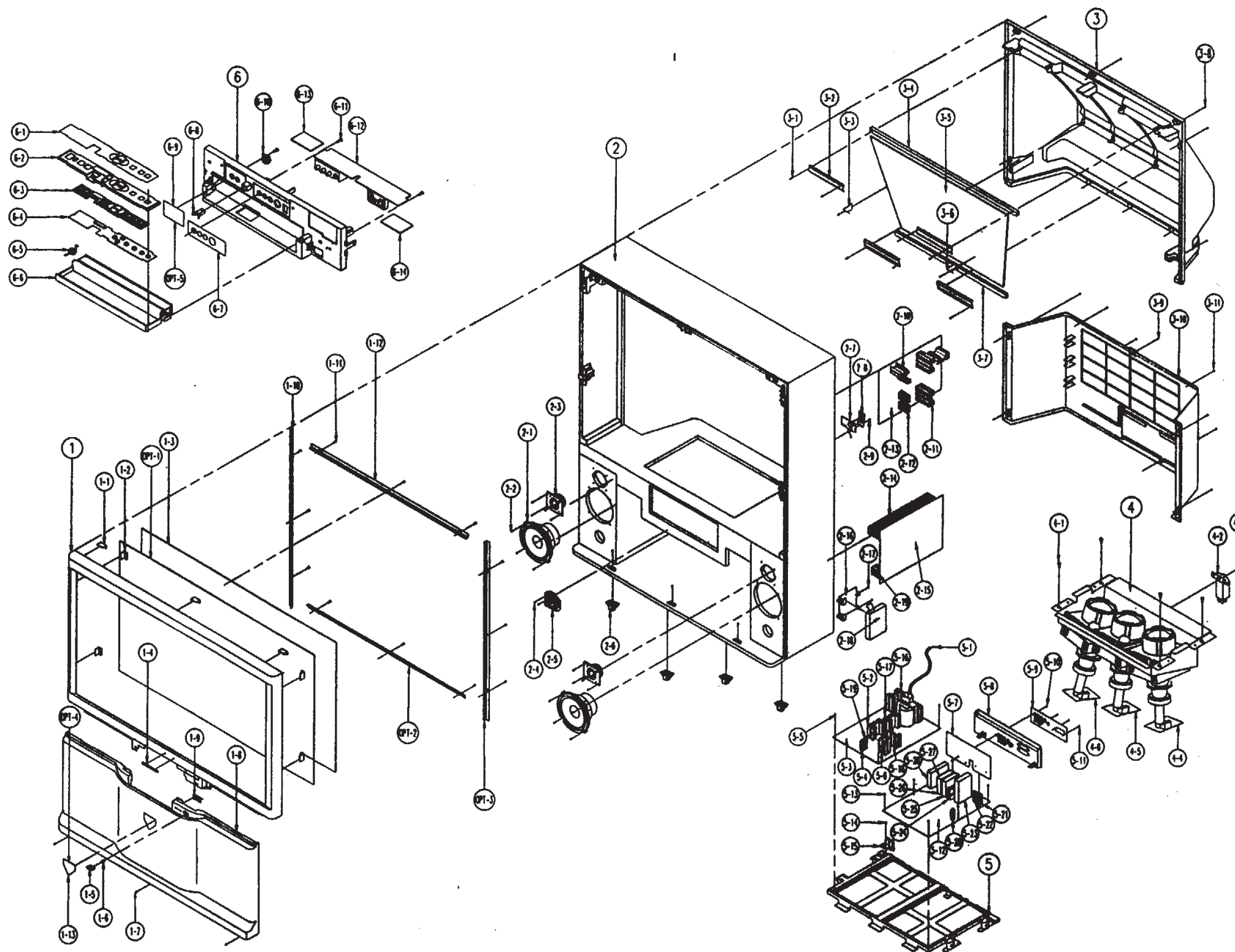


## 7. Exploded View & Parts List

### 7-1 SPM-4388PF/51AX



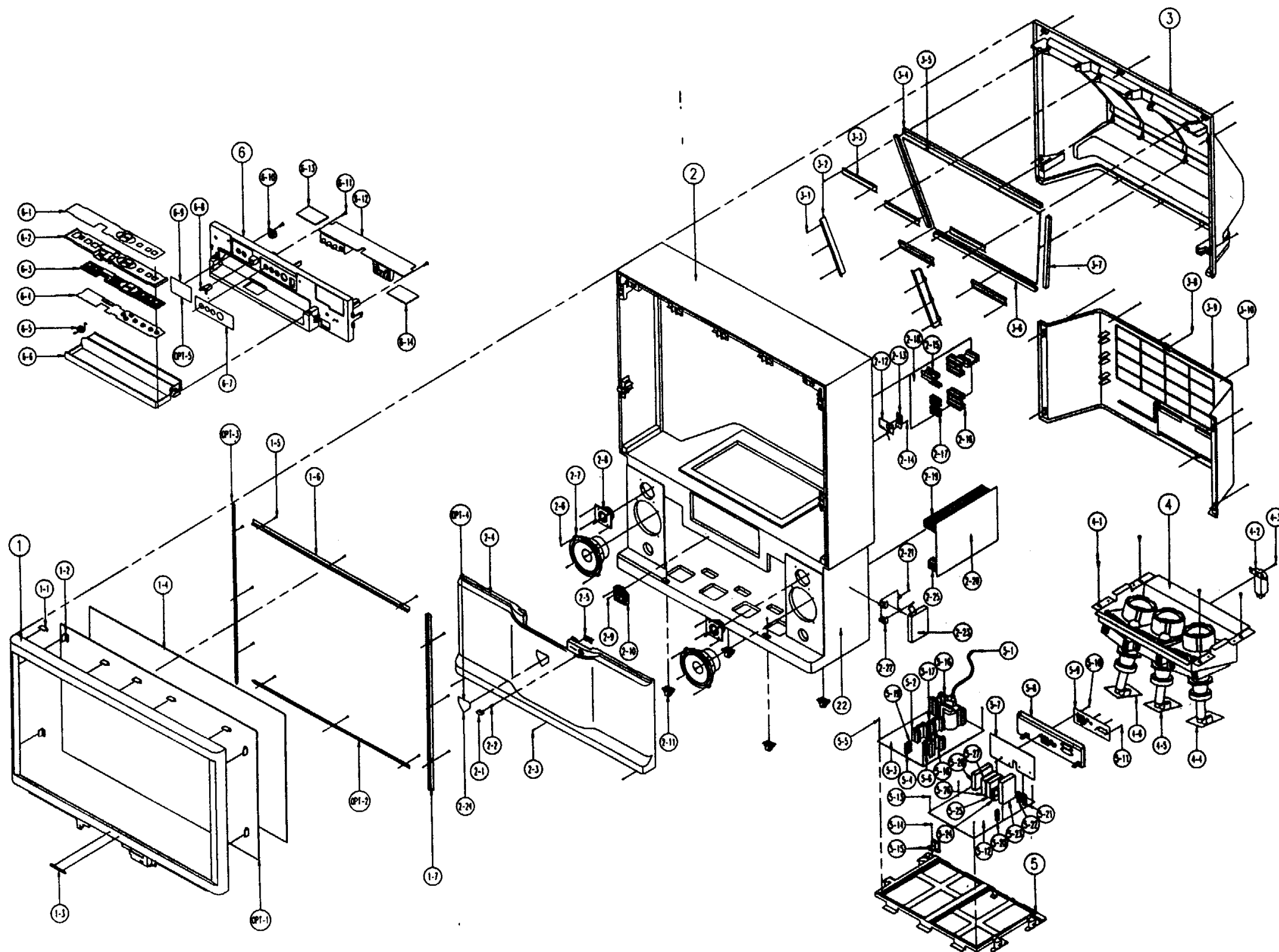
NO	DESCRIPTION	CODE NO	SPECIFICATION	QTY
1	CABINET-MASK	AA64-30512B	HIPS HB BLK	1
1-1	BOSS-CABINET	AA61-40026A	HIPS HB NTR	3
1-2	BOSS-CABINET	AA61-40025A	HIPS HB NTR	4
1-3	SCREEN-TINT	AA67-70031A	TINT 15% V-LINT1 T3	1
1-4	BADGE-BRAND	AA64-70105A	AL SS FLAT SILVER L70	1
1-5	KNOB-POWER	AA64-10360D	ABS HB BLK	1
1-6	SPRING-CS	AA61-60003A	SUS3 $\phi 4$ $\phi 5$ 007 H16 L7	1
1-7	SCREW-TAPTITE	AA60-10011A	HH + PC M4 L12 BLK	3
1-8	CABINET-BOTTOM	AA64-31070C	HIPS V0 BLK WP-1000	1
1-9	INDICATOR-LED	AA64-40218A	PC CLEAR	1
1-10	BRACKET-SCREEN, SIDE	AA61-10366A	SECC-1 T1.0	2
1-11	SCREW-TAPTITE	AA60-10011A	HH + PC M4 L12 BLK	12
1-12	BRACKET-SCREEN, BOT	AA61-10367A	SECC-1 T1.0	2
1-13	BADGE-DECO	AA64-70114A	AL TITANUM	1
OPT-1	SUN-SCREEN	AA67-70017A	TRAN = 82% T2	1
OPT-2	BRACKET-SCREEN, SIDE	AA61-10369A	SECC-1 T1.0(SUN SCREEN	2
OPT-3	BRACKET-SCREEN, BOT	AA61-10373A	SECC-1 T1.0(SUN SCREEN	2
OPT-4	BADGE-DECO	AA64-70115A	AL TITANUM	1
2	CABINET-MIDDLE	AA64-31069A	WOOD	1
2-1	SPEAKER	3001-000279	30W 8OHM 120MM MSE-50DF20	2
2-2	SCREW-TAPTITE	AA60-10012A	HH + PC M4 L18 BLK	16
2-3	SPEAKER	3001-000148	57BRZ0T 8R Z0W	2
2-4	SCREW-TAPTITE	AA60-10012A	HH + PC M4 L18 BLK	2
2-5	FOCUS-PACK	AA59-40002E	MHF 174-04	1
2-6	CASTER	-	TP4000	4
2-7	PCB-PREAMP	AA41-10436A	T1.6 W70 L40	1
2-8	BRACKET-PCB, RMC	AA61-10042A	SECC-1 T1.0	1
2-9	SCREW-TAPTITE	AA60-10011A	HH + PC M4 L12 BLK	1
2-10	HEATSINK-ES	AA62-30006A	A6063 EXTR WHT 55MM	1
2-11	HEATSINK-ES	AA62-30004F	A6063 EXTR WHT 70MM	1
2-12	HEATSINK-ES	AA62-30013A	A6063 EXTR T0-220 45	1

NO	DESCRIPTION	CODE NO	SPECIFICATION	QTY
2-13	ASSY-PCB, POWER	AA95-10002H	SPT51A PAL	1
2-14	HEATSINK-CONV	AA62-30001A	A6063 EXTR WHT	1
2-15	ASSY-PCB, CONVERGENCE	AA95-90001S	SPT51A PAL	1
2-16	BRACKET-MODULE	AA61-10049A	SECC-1 T0.6	1
2-17	SCREW-TAPPING	6002-000510	RH 3 * 8	3
2-18	ASSY-PCB, CONV, DC, MDL	AA95-90008J	SPT51A	1
2-19	HEATSINK-ES	AA96-50076A	QZ005, 2SC4635RB	1
3	CABINET-BACK, BOT	AA64-30433A	HIPS HB BLK	1
3-1	SCREW-TAPTITE	AA60-10011A	HH + PC M4 L12 BLK	1
3-2	BRACKET-MIRROR, A	AA61-10361A	SECC-1 T1.0	4
3-3	BRACKET-MIRROR, BL	AA61-10166A	SECC-1 T1.0	1
3-4	SPACER-MIRROR	AA63-60052C	HARD PVC BLK HB SOFT	1
3-5	MIRROR-FRONT	AA67-20010A	GLASS	1
3-6	BRACKET-MIRROR, BR	AA61-10168A	SECC-1 T1.0	1
3-7	SPACER-MIRROR	AA63-60052D	HARD PVC BLK HB SOFT	1
3-8	SCREW-TAPTITE	AA60-10012A	HH + PC M4 L18 BLK	7
3-9	SCREW-TAPTITE	AA60-10012A	HH + PC M4 L18 BLK	5
3-10	CABINET-BACK, BOT	AA64-30434A	HIPS V0 BLK	1
3-11	SCREW-TAPTITE	AA60-10011A	HH + PC M4 L12 BLK	4
4	BRACKET-CRT, MAIN	AA61-10380A	SECC-1 T1.6	1
4-1	SCREW-TAPTITE	AA60-10001A	M6 L20 SCM30C YEL	4
4-2	BRACKET-H, V	AA61-10149A	SECC-1 T1.0	1
4-3	SCREW-TAPTITE	AA60-10011A	HH + PC M4 L12 BLK	1
4-4	ASSY-CRT, RED	AA95-2000B	SPT51A PAL	1
4-5	ASSY-CRT, GREEN	AA95-2000C	SPT51A PAL	1
4-6	ASSY-CRT, BLUE	AA95-2000D	SPT51A PAL	1
5	HOLDER-CHASSIS	AA61-20142B	ABS V0 GRY	1
5-1	TRANS-FLYBACK	AA26-30001U	FBT FWZ-438001	1
5-2	HEATSINK-EN	AA96-50066B	Q402, 2SD1887YD	1
5-3	ASSY-PCB, DIFLECTION	AA96-90001R	SPT51A PAL	1
5-4	HEATSINK-ES	AA95-50149A	QV09, KSC815	1
5-5	SCREW-TAPPING	AA60-10008A	TM 3 * 10 YEL	6

NO	DESCRIPTION	CODE NO	SPECIFICATION	QTY
5-6	HEATSINK-ES	AA96-50141B	Q302, KSA614	1
5-7	ASSY-PCB, A/V SW	AA95-40002X	SPT51A PAL	1
5-8	TERMINAL-BOARD, ANT	AA63-40138A	HIPS HB BLK	1
5-9	INLAY-BACK	AA64-60286A	PS T0.5 BLK	1
5-10	SCREW-TAPPING	6002-000512	RH + 2 M4 L12 BLK	2
5-11	SCREW-TAPPING	6002-000512	RH + 2 M3 L10 BLK	2
5-12	ASSY-PCB, MAIN	AA94-20002M	SPR51A PAL	1
5-13	SCREW-TAPPING	AA60-10008A	TH + M3 L10 YEL	6
5-14	SCREW-TAPTITE	AA60-10011A	HH + PC M4 L12 BLK	1
5-15	HOLDER-CORD	AA61-20135B	HIPS V0 BLK	1
5-16	HEATSINK-ES	AA96-50163A	Q429, ISD1090	1
5-17	HEATSINK-ES	AA96-50066C	Q404, 2SD1880YD	1
5-18	HEATSINK-ES	AA96-50074A	IC301, TDA8350Q	1
5-19	HEATSINK-ES	AA96-50149B	QV08, 2SA1011	1
5-20	HEATSINK-ES	AA96-50147B	IC80001, KA7808	1
5-21	HEATSINK-ES	AA96-501555D	IC80003, KA78R12	1
5-22	HEATSINK-ES	AA96-50147C	IC80004, KA7809A	1
5-23	ASSY PCB-AUDIO	AA95-40004C	SPT51A	1
5-24	TUNER	AA40-10002N	TU01, TECC0889PA19C	1
5-25	ASSY-PCB-IF	AA95-90012B	SCT51A	1
5-26	ASSYPCB-TTX	AA95-90003U	SCT51A	1
5-27	TUNER	AA40-10002N	TU02, TECC0889PA19C	1
5-28	ASSY PCB-PIP	AA95-90003W	SCT51A	1
6	HOLDER-CONT, BOT	AA61-20102A	ABS HB BLK	1
6-1	INLAY-DOOR	AA64-60112B	PS T0.5 BLK	1
6-2	HOLDER-KEY	AA61-20114A	ABS HB BLK	1
6-3	KNOB-CONTROL, ASSY	AA64-10214C	ABS HB BLK	1
6-4	PCB-CONTROL	AA91-60049B	SPT51A PAL	1
6-5	SPRING-CS	AA61-60048A	SUS304 0.8 0D9.6 H6 N5	1
6-6	DOOR-BOTTOM	AA64-50082D	ABS HB BLK	1
6-7	INLAY-CONT, BOT	AA64-60264B	PS T0.3 BLK	1

NO	DESCRIPTION	CODE NO	SPECIFICATION	QTY
6-8	LATCH-DOOR	AA61-30001A	KIFUCO LA701	1
6-9	INLAY-MIC	AA64-60244A	PS T0.3 BLK	1
OPT-5	INLAY-MIC	AA64-60244B	PS T0.3 BLK	1
6-10	DAMPER-GEAR	AA61-80005B	20G OIL	1
6-11	SCREW-TAPPING	AA60-10002A	RH 4 * 12 YEL	2
6-12	ASSY-PCB, A/V S/W	AA95-40002T	SVP-460S	1

### 7-2 SPM-5288PF/51AX



NO	DESCRIPTION	CODE NO	SPECIFICATION	QTY
1	CABINET-FRONT	AA64-30005B	HIPS HB BLK	1
1-1	BOSS-CABINET	AA61-40026A	HIPS HB NTR	5
1-2	BOSS-CABINET	AA61-40012A	HIPS HB NTR	4
1-3	BADGE-BRAND	AA64-70105A	AL SS FLAT SILVER L70	1
1-4	SCREEN-TINT	AA67-70031A	TINT 15% V-LINT1 T3	1
1-5	SCREW-TAPTITE	AA60-10011A	HH + PC M4 L12 BLK	12
1-6	BRACKET-SCREEN,BOT	AA61-10368A	SECC-1 T1.0 5288	2
1-7	BRACKET-SCREEN,BOT	AA61-10367A	SECC-1 T1.0 4388	2
OPT-1	SUN-SCREEN	AA67-70048A	TRAN = 82% T2	1
OPT-2	BRACKET-SCREEN,BOT	AA61-10370A	SECC-1 T1.0 5288	2
OPT-3	BRACKET-SCREEN	AA61-10373A	SECC-1 T1.0 4388	2
2	CABINET-MIDDLE	AA64-31068A	WOOD	1
2-1	KNO-POWER	AA64-103600	ABS HB BLK	1
2-2	SPRING-CS	AA61-60003A	SUS 3 $\phi$ 4 $\phi$ 0.5 007 H16 L7	1
2-3	SCREW-TAPTITE	AA60-10011A	HH + PC M4 L12 BLK	3
2-4	CABINET-BOTTOM	AA64-30504F	HIPS HB BLK	1
2-5	INDICATOR	AA64-40218A	PC CLEAR	1
2-6	SCREW-TAPTITE	AA60-10012A	HH + PC M4 L18 BLK	16
2-7	SPEAKER	3001-000176	35W 80HM 92DB 150HZ	2
2-8	SPEAKER	3001-000153	20W 80HM 93DB 1.3KHZ	2
2-9	SCREW-TAPTITE	AA60-10012A	HH + PC M4 L18 BLK	2
2-10	FOCUS-PACK	AA59-40002E	MHF 174-04	1
2-11	CASTER	-	TP4000	4
2-12	PCB-PREAMP	AA41-10436A	T1.6 W70 L40	1
2-13	BRACKET-PCB,RMC	AA61-10042A	SECC-1 T1.0	1
2-14	SCREW-TAPTITE	AA60-10011A	HH + PC M4 L12 BLK	3
2-15	HEATSINK-ES	AA62-30006A	A6063 EXTR WHT 55MM	1
2-16	HEATSINK-ES	AA62-30004F	A6063 EXTR WHT 70MM	1
2-17	HEATSINK-ES	AA62-30013A	A6063 EXTR T0-220 45	1
2-18	ASSY-PCB,POWER	AA95-10002H	SPT51A PAL	1
2-19	HEATSINK-CONV	AA62-30001A	A6063 EXTR WHT	1

NO	DESCRIPTION	CODE NO	SPECIFICATION	QTY
2-20	ASSY-PCB,CONVERGENCE	AA95-90001S	SPT51A PAL	1
2-21	SCREW-TAPPING	6002-000510	RH 3* 8 BLK	3
2-22	BRACKET-MODULE	AA61-10049A	SECC-1 T0.6	1
2-23	ASSY-PCB,CONV,DC,MDL	AA95-90008J	SPT51A	1
2-24	BADGE-DECO	AA64-70114A	AL TITANUM	1
2-25	HEATSINK-ES	AA96-50076A	QZ005, 2SC4635RB	1
OPT-4	BADGE-DECO	AA64-70115A	AL TITANUM	1
3	CABINET-BACK, TOP	AA64-30714A	HIPS HB BLK	1
3-1	SCREW-TAPTITE	AA60-10011A	HH + PC M4 L12 BLK	16
3-2	BRACKET-MIRROR,C	AA61-10242A	SECC-1 T1.0	2
3-3	BRACKET-MIRROR,A	AA61-10361A	SECC-1 T1.0	5
3-4	SPACER-MIRROR	AA63-60052A	HARD PVC BLK HB SOFT	1
3-5	MIRROR-FRONT	AA67-20011A	GLASS 968 * 677	1
3-6	SPACER-MIRROR	AA63-60052B	HARD PVC BLK HB SOFT	1
3-7	SPACER-MIRROR	AA63-60052E	HARD PVC BLK HB SOFT	2
3-8	SCREW-TAPTITE	AA60-10012A	HH + PC M4 L18 BLK	1
3-9	CABINET-BACK,BOT	AA64-30434A	HIPS V0 BLK	1
3-10	SCREW-TAPTITE	AA60-10011A	HH + PC M4 L12 BLK	4
4	BRACKET-CRT,MAIN	AA61-10380A	SECC-1 T1.6	1
4-1	SCREW-TAPTITE	AA60-10001A	M6 L20 SCM30C YEL	4
4-2	BRACKET-H,V	AA61-10149A	SECC-1 T1.0	1
4-3	SCREW-TAPTITE	AA60-10011A	HH + PC M4 L12 BLK	1
4-4	ASSY-CRT,RED	AA95-2000B	SPT51A PAL	1
4-5	ASSY-CRT,GREEN	AA95-2000C	SPT51A PAL	1
4-6	ASSY-CRT,BLUE	AA95-2000D	SPT51A PAL	1
5	HOLDER-CHASSIS	AA61-20142B	ABS V0 GRV	1
5-1	TRANS-FLYBACK	AA26-30001U	FBT FWZ-43B001	1
5-2	HEATSINK-EN	AA96-50066B	Q402, 2SD1887YD	1
5-3	ASSY-PCB,DIFLECTION	AA96-90001R	SPT51A PAL	1
5-4	HEATSINK-ES	AA95-50149A	QV09, KSC815	1
5-5	SCREW-TAPPING	AA60-10008A	TH 3 * 10 YEL	4

NO	DESCRIPTION	CODE NO	SPECIFICATION	QTY
5-6	HEATSINK-ES	AA96-50141B	Q302, KSA614	1
5-7	ASSY-PCB, A/V SW	AA95-40002X	SPT51A PAL	1
5-8	TERMINAL-BOARD, ANT	AA63-40138A	HIPS HB BLK	1
5-9	INLAY-BACK	AA64-60286A	PS T0.5 BLK	1
5-10	SCREW-TAPPING	6002-000512	RH + 2 M4 L12 BLK	2
5-11	SCREW-TAPPING	6002-000505	RH + 2 M3 L10 BLK	2
5-12	ASSY-PCB, MAIN	AA94-20002M	SPR51A PAL	1
5-13	SCREW-TAPPING	AA60-10008A	TH + M3 L10 YEL	6
5-14	SCREW-TAPTITE	AA60-10011A	HH + PC M4 L12 BLK	1
5-15	HOLDER-CORD	AA61-20135B	HIPS V0 BLK	1
5-16	HEATSINK-ES	AA96-50163A	Q429, ISD1090	1
5-17	HEATSINK-ES	AA96-50066C	Q404, 2SD1880YD	1
5-18	HEATSINK-ES	AA96-50074A	IC301, TDA8350Q	1
5-19	HEATSINK-ES	AA96-50149B	QV08, 2SA1011	1
5-20	HEATSINK-ES	AA96-50147B	IC80001, KA7808	1
5-21	HEATSINK-ES	AA96-501555D	IC80003, KA78R12	1
5-22	HEATSINK-ES	AA96-50147C	IC80004, KA7809A	1
5-23	ASSY PCB-AUDIO	AA95-40004C	SPT51A	1
5-24	TUNER	AA40-10002N	TU01, TECC0889PA19C	1
5-25	ASSY-PCB-IF	AA95-90012B	SCT51A	1
5-26	ASSYPCB-TTX	AA95-90003U	SCT51A	1
5-27	TUNER	AA40-10002N	TU02, TECC0889PA19C	1
5-28	ASSY PCB-PIP	AA95-90003W	SCT51A	1
6	HOLDER-CONT, BOT	AA61-20102A	ABS HB BLK	1
6-1	INLAY-DOOR	AA64-60112B	PS T0.5 BLK	1
6-2	HOLDER-KEY	AA61-20114A	ABS HB BLK	1
6-3	KNOB-CONTROL, ASSY	AA64-10214C	ABS HB BLK	1
6-4	PCB-CONTROL	AA91-60049B	SPT51A PAL	1
6-5	SPRING-CS	AA61-60048A	SUS304 0.8 OD9.6 H6 N5	1
6-6	DOOR-BOTTOM	AA64-50082D	ABS HB BLK	1
6-7	INLAY-CONT, BOT	AA64-60264B	PS T0.3 BLK	1

NO	DESCRIPTION	CODE NO	SPECIFICATION	QTY
6-8	LATCH-DOOR	AA61-30001A	KIFUC0 LA701	1
6-9	INLAY-MIC	AA64-60244A	PS T0.3 BLK	1
OPT-5	INLAY-MIC	AA64-60244B	PS T0.3 BLK	1
6-10	DAMPER-GEAR	AA61-80005B	20G 01L	1
6-11	SCREW-TAPPING	AA60-10002A	RH 4 * 12 YEL	2
6-12	ASSY-PCB, A/V S/W	AA95-40002T	SVP-46DS	1